

## Component Replacement - electrical -



*Xperia™ Z3*  
*D6633, L55t, L55u, D6683*

## CONTENTS

1	Replaceable Components .....	3
2	Component Placing.....	5
3	Additional Repair info .....	6
4	Revision History .....	12

*For general information about electrical repair related issues, refer to 1220-1336: Generic Repair Manual - electrical*

*Baking prior to repair is required, if the board have been exposed to air more than 12 hours from PWB package opening. Too long exposure time increase the level of moisture in PWB and the PWB could delaminate during repair process and result in direct or latent failures and reduce reliability.  
The boards shall be baked in 125°C ±5°C for 4 hours.*

*Test after electrical replacement: refer to 1273-1772 Mechanical Test Instruction*

*All Electrical components are RLC level B, Reversed Logistic Classification, See the Spare Part Handling chapter in Mechanical/Generic Repair Manual 1220-1333.*

*Do not remove shield can lids (Heat pasta are added and RF performance will be damaged)*

## 1 Replaceable Components

### EXPLANATION OF ABBREVIATIONS USED IN THE COLUMN 'COMMENTS' BELOW

#### **COMPONENT LOCATION**

**P** = Primary side

**S** = Secondary side

#### **REPAIR METHOD**

**HA** = Hot Air (removal & mounting)

**ST** = Soldering Tool (removal & mounting)

**HA/ST** = Hot Air for removal - Soldering Tool for mounting

**BGA** = BGA Station

**BH** = Bottom Heater

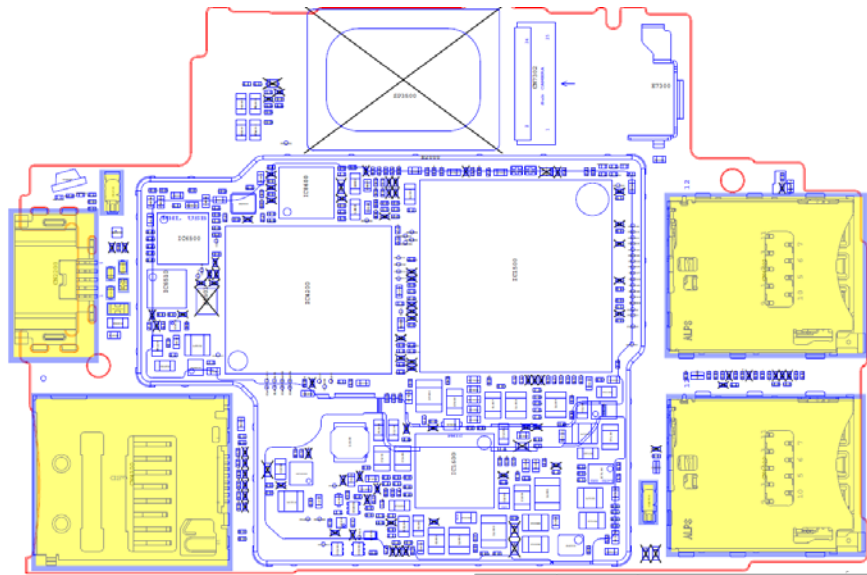
#### **ADDITIONAL INFORMATION**

⇒1 (2,3,4, etc.) = Proceed to 'Additional Repair Info' for further instructions in the indicated section(s).

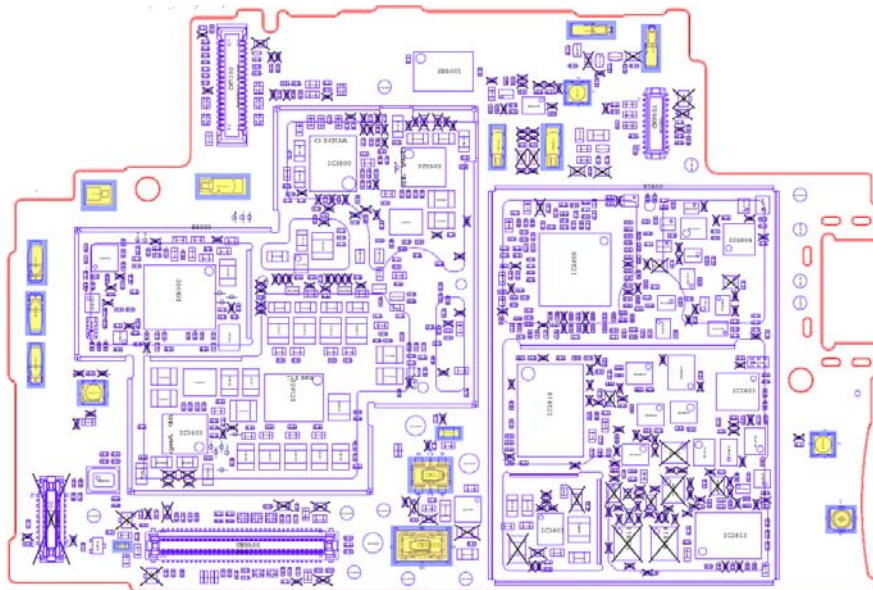
Position	Component	Part no.	Comments
CN1300	Conn BtB Plug 4p HIROSE/BM22	1281-9973	S HA+BH ⇒1
CN1301	Conn BtB Receptacle 4p HIROSE/BM22	1264-6156	S HA+BH ⇒2
CN2200	Conn USB B Receptacle 5p	1268-3388	P HA+BH or BGA ⇒3
CN2701	Conn Coax Receptacle 1p	1261-3585	S HA+BH ⇒4
CN2702	Conn Coax Receptacle 1p	1237-5326	S HA+BH ⇒5
CN2703	Conn Leaf Spring Plug 1p Antenna/GND Spr	1239-2123	S HA+BH ⇒6
CN2704	Conn Leaf Spring Plug 1p Antenna/GND Spr	1239-2123	S HA+BH ⇒6
CN2705	Conn Leaf Spring Receptacle 1p Antenna/G	1238-5879	P HA+BH ⇒7
CN2706	Conn Coax Receptacle 1p	1237-5326	S HA+BH ⇒8
CN2709	Conn Leaf Spring Receptacle 1p Antenna/G	1238-5879	P HA+BH ⇒9
CN4000	Card Conn SIM Nano	1278-7930	P HA+BH or BGA ⇒10
CN4001	Card Conn SIM Nano	1278-7930	P HA+BH or BGA ⇒11
CN4100	Card Conn Micro SD	1281-9124	P HA+BH or BGA ⇒12
CN7301	Conn Leaf Spring Plug 1p Antenna/Groundi	1238-5878	S HA+BH ⇒13
CN8000	Conn Leaf Spring Plug 1p	1270-6330	S HA+BH ⇒14
CN8001	Conn Leaf Spring Plug 1p	1270-6330	S HA+BH ⇒14
CN8002	Conn Leaf Spring Plug 1p	1270-6330	S HA+BH ⇒14
CN8003	Conn Coax Receptacle 1p	1237-5326	S HA+BH ⇒15
CN8600	Conn Leaf Spring Plug 1p Antenna/Groundi	1238-5878	S HA+BH ⇒16
CN8601	Conn Leaf Spring Plug 1p Antenna/Groundi	1238-5878	S HA+BH ⇒16
D2200	Diode	1201-8440	P HA+BH ⇒17
D2201	Diode	1201-8440	P HA+BH ⇒18
D2202	Diode	1201-8440	P HA+BH ⇒19
D7800	LED flash LED 2.03mmx1.63mmx0.70mm	1277-7270	S HA+BH ⇒20
FL2200	Filter 100.0 MHz 0,85*0,65*0,45	1256-1194	P HA+BH ⇒21
FL2202	Filter Ceramic Lo-pass 50.0 MHz 1608	1269-0526	P HA+BH ⇒22
R1304	Resistor 0.01 Ohm +/-1% 200.0 mW (1.6x0.	1238-2147	S HA+BH ⇒23
R5100	Fuse 0.25A 1.0*0.5mm	1265-7224	S HA+BH ⇒24

## 2 Component Placing

To access the Component Placing document, double-click the icon below.  
Applicable for on-screen viewing only – icon not shown on hard-copies.



**Primary side**



**Secondary side**

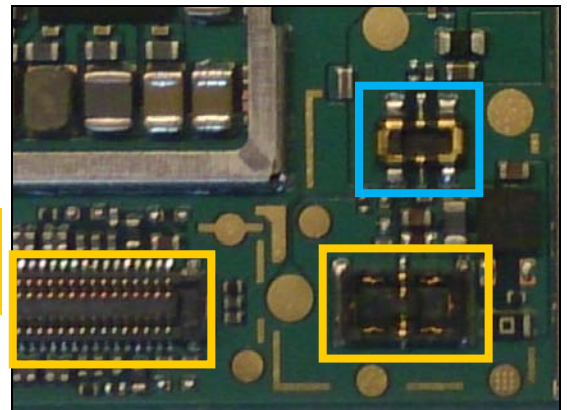
## 3 Additional Repair info

1

CN1300

**Replace if mechanical damaged. (Phone dead or power off)**

**Protect the BtB connectors with capton tape!**

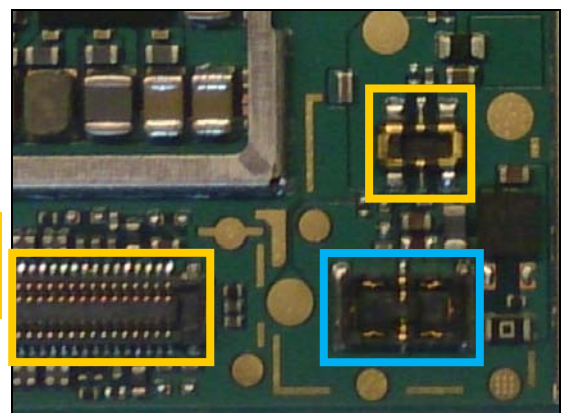


2

CN1301

**Replace if mechanical damaged. (Magnet charger not working)**

**Protect the BtB connectors with capton tape!**

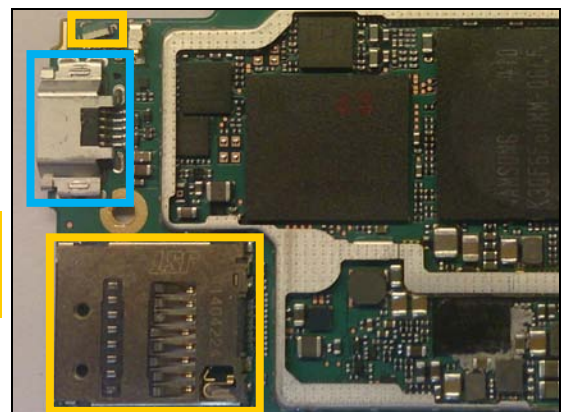


3

CN2200

**Replace if mechanical damaged (USB charger or data transfer not working)**

**Protect the SD connector and LED with capton tape!**

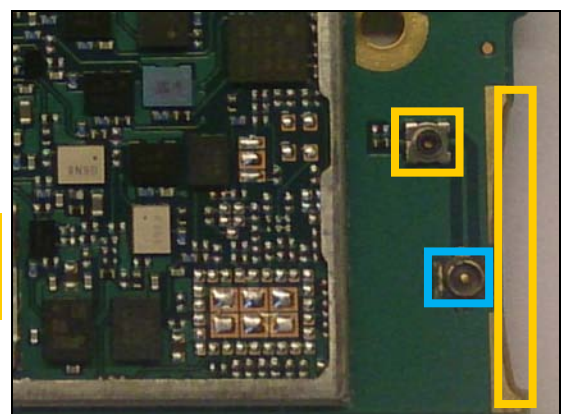


4

CN2701

**Replace if mechanical damaged (No or bad network, main antenna)**

**Protect the RF and SD connectors with capton tape!**





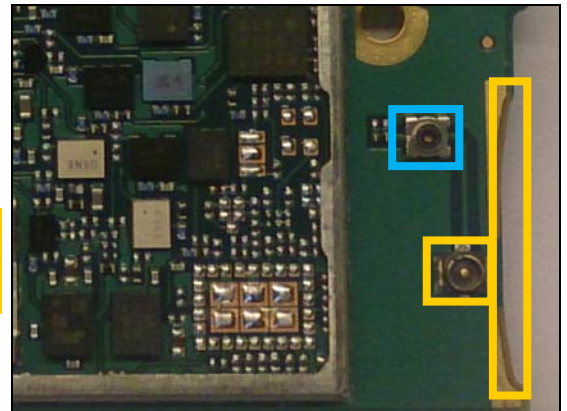
## Repair Actions: Additional Repair Info

5

CN2702

**Replace if open circuit 1-3 (No or bad network, main antenna)**

**Protect the RF and SD connectors with capton tape!**

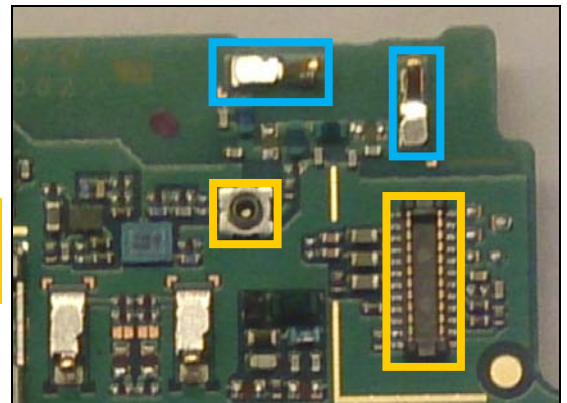


6

CN2703, CN2704

**Replace if mechanical damaged (No or bad GPS /network secondary antenna)**

**Protect the RF and BtB connectors with capton tape!**

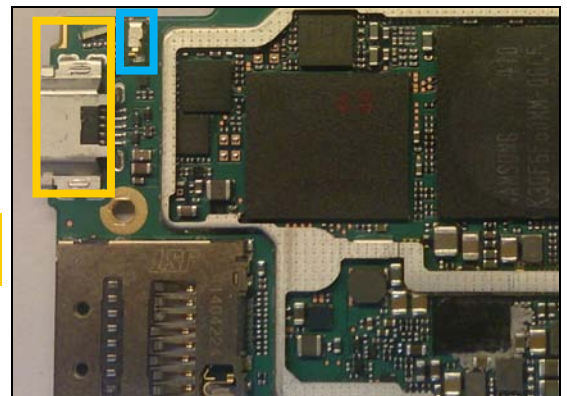


7

CN2705

**Replace if mechanical damaged (Grounding pin)**

**Protect the USB connector and LED with capton tape!**

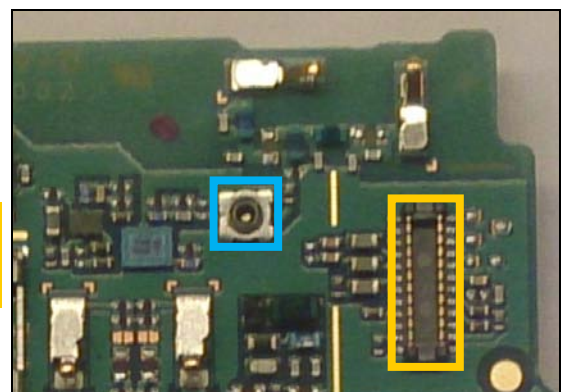


8

CN2706

**Replace if open circuit 1-3 (No or bad GPS /network secondary antenna)**

**Protect the BtB connector with capton tape!**



## Repair Actions: Additional Repair Info

9

CN2709

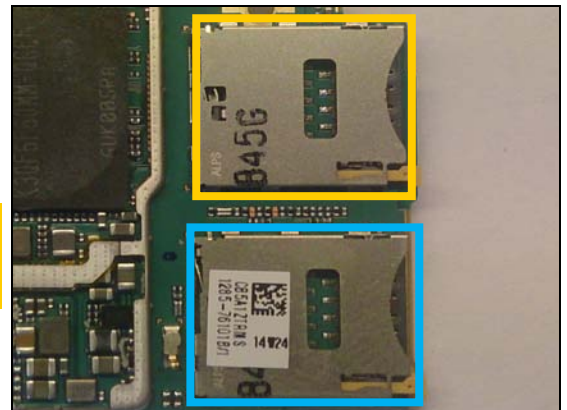
**Replace if mechanical damaged (Grounding pin)**  
**Protect the SIM connector with capton tape!**



10

CN4000

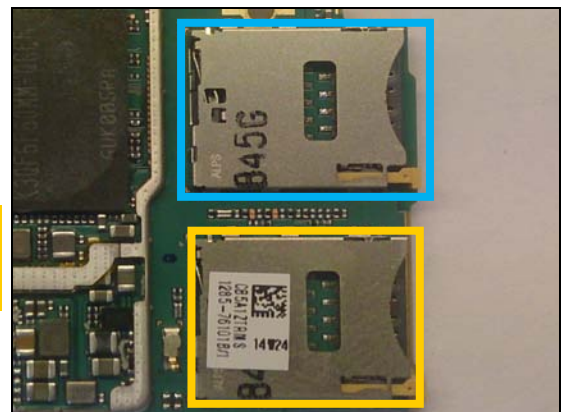
**Replace if mechanical damaged (No network, restart, No SIM 1 card inserted, NFC SIM problem)**  
**Protect the SIM 2 card connector with capton tape!**



11

CN4001

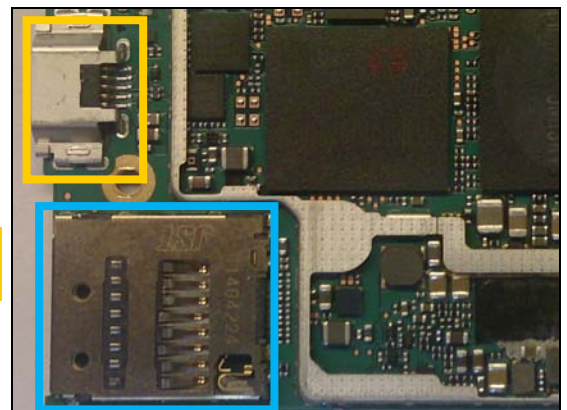
**Replace if mechanical damaged (No network, restart, No SIM 2 card inserted, reset problem)**  
**Protect the SIM 1 card connector with capton tape!**



12

CN4100

**Replace if mechanical damaged (No SD card )**  
**Protect the USB connector with capton tape!**



## Repair Actions: Additional Repair Info

1291-9327 Rev 4

© Sony Mobile Communications AB – Company Internal

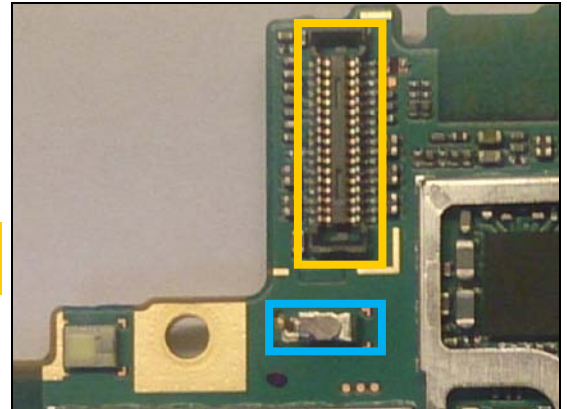
8(12)



13

CN7301

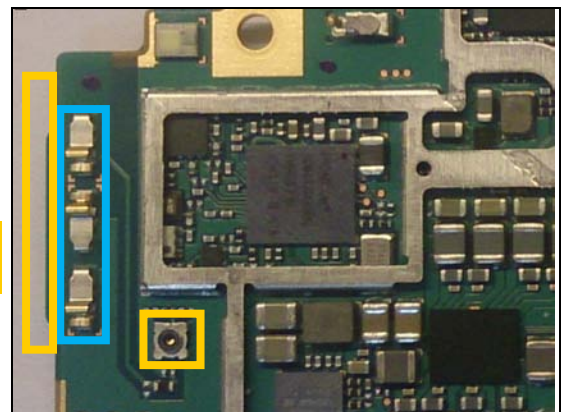
*Replace if mechanical damaged (Grounding pin)  
Protect the BtB connector with capton tape!*



14

CN8000, CN8001, CN8002

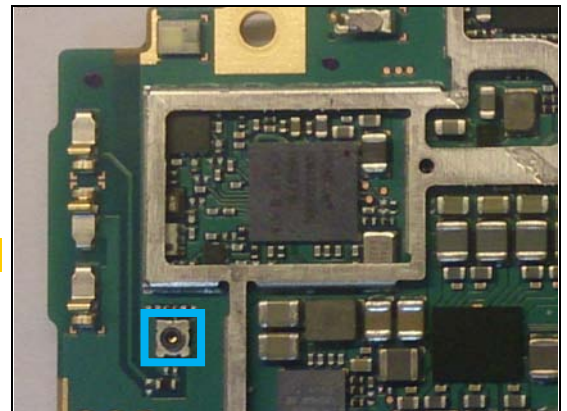
*Replace if mechanical damaged (no or bad WLAN/ BT)  
Protect the SIM 2 and RF connectors with capton tape!*



15

CN8003

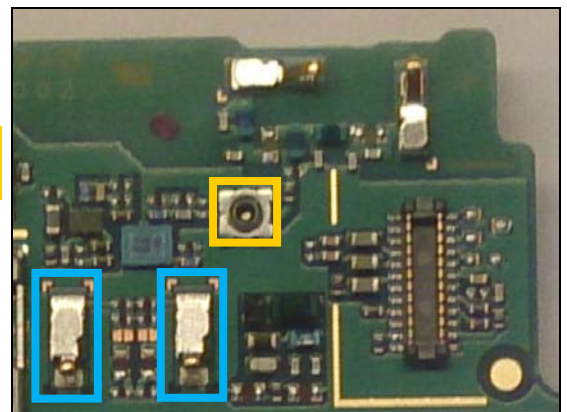
*Replace if open circuit 1-3 (no or bad WLAN/ BT)*



16

CN8600, CN8601

*Replace if mechanical damaged (No or bad NFC)  
Protect the RF connector with capton tape!*

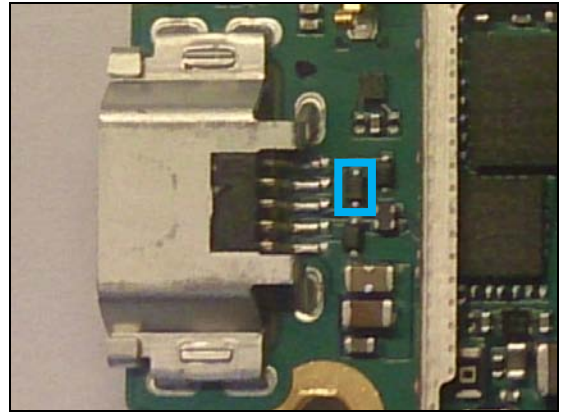


## Repair Actions: Additional Repair Info

**17**

**D2200**

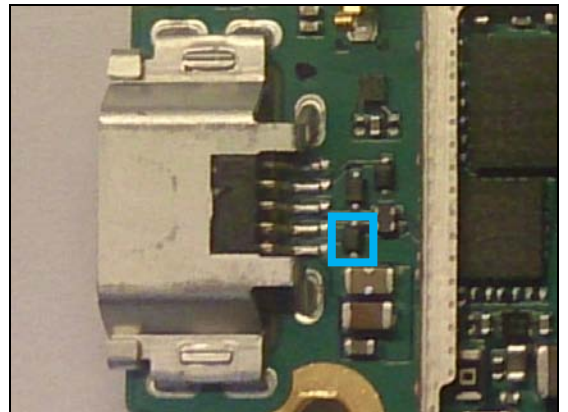
**Replace if short circuit (USB charger not working )**



**18**

**D2201**

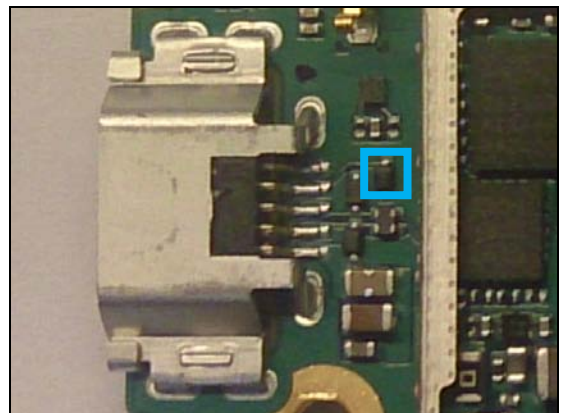
**Replace if short circuit (USB charger not working )**



**19**

**D2202**

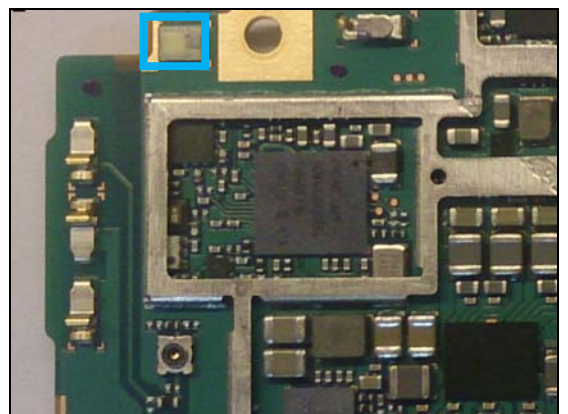
**Replace if short circuit (USB charger not working )**



**20**

**D7800**

**Replace if Flash LED not working**



## Repair Actions: Additional Repair Info

1291-9327 Rev 4

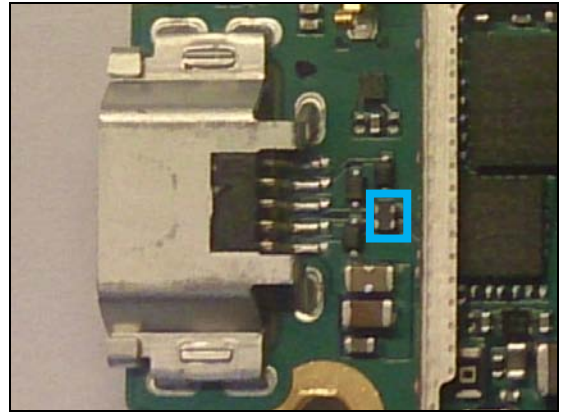
© Sony Mobile Communications AB – Company Internal

10(12)

**21**

**FL2200**

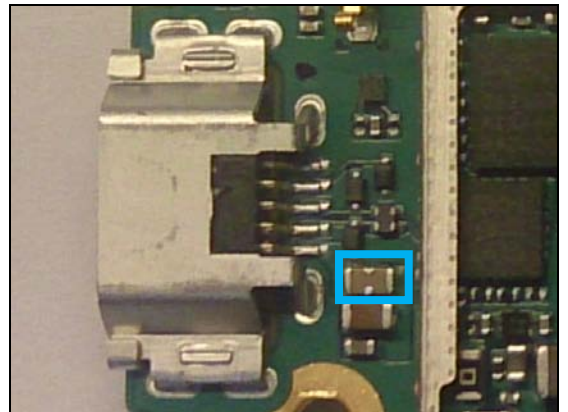
***Replace if open circuit 1-2 or 3-4 (USB charger not working)***



**22**

**FL2202**

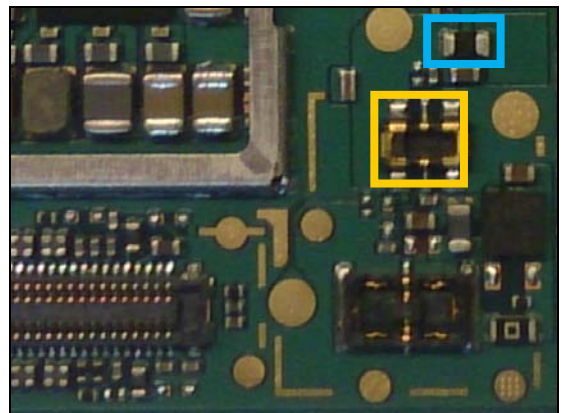
***Replace if open circuit 1-3 (USB charger not working)***



**23**

**R1304**

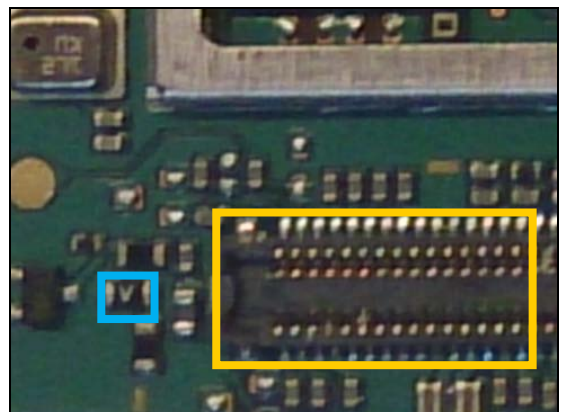
***Replace if open circuit (Phone dead)***  
***Protect the BtB connectors with capton tape!***



**24**

**R5100**

***Replace if open circuit (Vibrator not working)***  
***Protect the BtB connectors with capton tape!***



## 4 Revision History

Rev.	Date	Changes / Comments
1	2014-09-11	Initial release
2	2015-04-01	Added D2200, D2201, D2202, FL2200 and FL2202
3	2015-04-14	Added D6683
4	2015-04-26	Added baking information.